



**Project:** 2023 Rehab Rev. #: 0 **Location:** Chwk Mtn Rd - Schweyey to Grand View  
**Sign Spacing:** 40 **Taper Lengths:** 35

**Comments:**

1. Workers can only leave work zone when accompanied by a TCP
2. A buffer truck is in closure when workers are present
3. Traffic can be stopped for up to 2 minutes at a time
4. TCP indicated on drawing is mobile and moves with workers

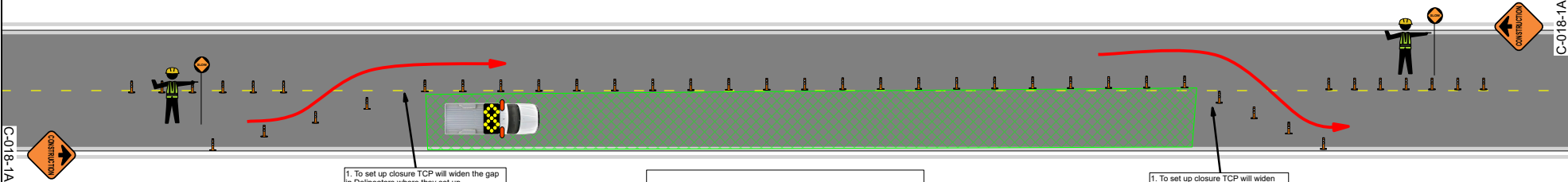


### GENERIC S.L.A.T. LAYOUT AND INSTALL CLOSURE FOR INTERMITTENT MOVING WORK ZONE

**Project:** Moving Work Zone S.L.A.T CL Layout

**Comments:**

- 1) Install delineators just off centre of CL so the side you are doing measurements from is bigger
- 2) When work in closure complete and starting to move, walk to new closure off of the road
- 3) TCP stops traffic from the side of the travel lane and moves in front of vehicles once they are stopped



C-018-1A

C-018-1A

- 1. To set up closure TCP will widen the gap in Delineators where they set up
- 2. When closure moves replace the delineator in correct place
- 3. Use the 3 delineators preceding where you will send traffic as a taper



- Comments:**
- 1. Taper lengths appropriate to speed of roadway (not shown to scale)
  - 2. Sign spacing appropriate to speed of roadway (not shown to scale)
  - 3. Workers can only leave work zone when accompanied by a TCP
  - 4. A buffer truck is in closure when workers are present
  - 5. Traffic can be stopped for up to 2 minutes at a time
  - 6. TCP indicated on drawing is mobile and moves with workers

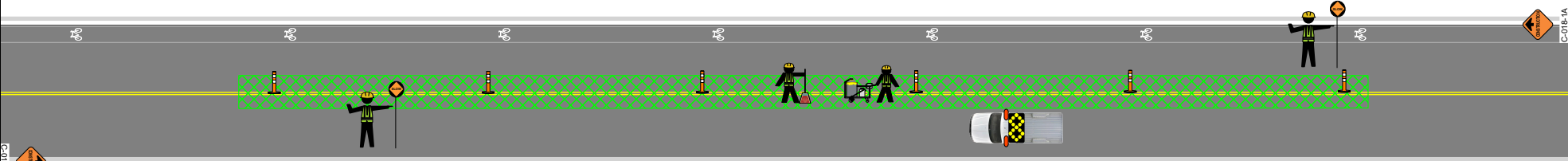
- 1. To set up closure TCP will widen the gap in delineators to allow traffic to move back to correct lane
- 2. When closure moves, delineators are restored to centreline

### GENERIC SLOW ROLL INSTALL CLOSURE

**Project:** Slow Roll S.L.A.T CL Install

**Comments:**

- 1) East TCP holds traffic
- 2) West TCP sends traffic around closure
- 3) West TCP walks west on south shoulder 100 to 150m from Work Zone
- 4) West TCP holds eastbound traffic at new location
- 5) East TCP sends westbound traffic
- 6) East TCP walks west on north shoulder or south travel lane (whichever is safest) to within 50m of work zone



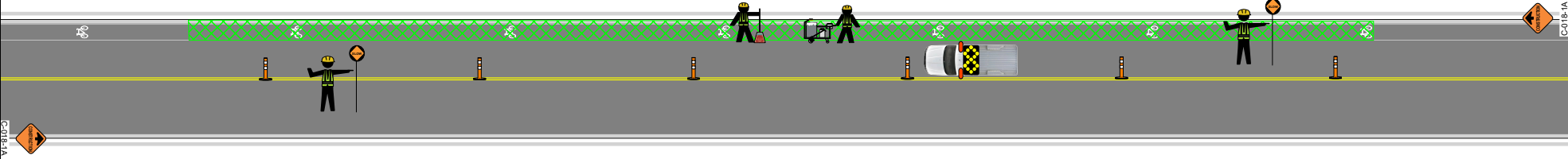
**Project:** Slow Roll S.L.A.T EL Install

**Comments:**

- 1) East TCP holds traffic
- 2) West TCP sends traffic around closure
- 3) West TCP walks west on north shoulder 100 to 150m from Work Zone
- 4) West TCP holds eastbound traffic at new location
- 5) East TCP sends westbound traffic
- 6) East TCP walks west on north shoulder to within 50m of work zone

**Comments:**

- 1. Taper lengths appropriate to speed of roadway (not shown to scale)
- 2. Sign spacing appropriate to speed of roadway (not shown to scale)
- 3. Workers can only leave work zone when accompanied by a TCP
- 4. A buffer truck is in closure when workers are present
- 5. Traffic can be stopped for up to 2 minutes at a time
- 6. TCP indicated on drawing is mobile and moves with workers





**Project:** Stop bar/Rat tail

- Comments:**
- 1. Taper lengths appropriate to speed of roadway (not shown to scale)
  - 2. Sign spacing appropriate to speed of roadway (not shown to scale)
  - 3. Workers can only leave work zone when accompanied by a TCP
  - 4. A buffer truck is in closure when workers are present
  - 5. Traffic can be stopped for up to 2 minutes at a time
  - 6. TCP indicated on drawing is mobile and moves with workers

